

"#\$%&'()*+,-./:0123456789@!&*'()&*(!+, -!. /#0/)'!123\$*!&!

Ma a D La M S

!

Purpose

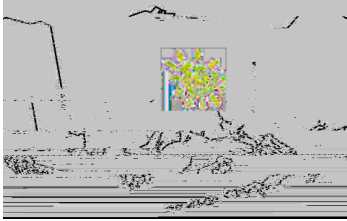
The Tanana District 4-H Leaders Council Scholarship encourages the 4-H community to develop and enhance the 4-H experience of its members, leaders, and community through participation in workshops, conferences, educational opportunities, or events related to their 4-H projects.

Procedures

- 1) Successful applicants must be a current enrolled 4-

"#\$%&'()*+,-./:0123456789@!&*'()&*(!+, -!. /#0/)'!123\$*!&!'!#''/5647!28!+, -!. /#0/)'9!
: 4!+, -!. /#0/)'!#) /!/\$*23#; /0!(2!<#)(!<#(/!*) /#(&\$; !2<<2)(3\$&(&'!82)!23)!+, -!*2553\$&(79!!
"#\$%&'()*+,-./:0123456789@!&*'()&*(!+, -!. /#0/)'!123\$*!&!' 3<<2)(' !#0!<)252(/' !' 3<<4/5/\$(#44/#0/)' >&<!!
#0!/03*#(&2\$#4!2<<2)(3\$&(&'!82)!+, -!723(>!#04/#0/)'9!

!



"#\$#\$#!%&')&* (!+,-!. /#0/)'!123\$*&!

Ma a D La M S

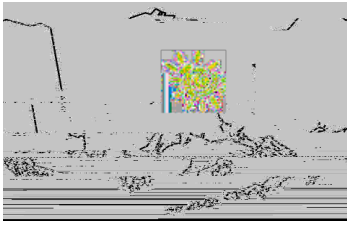


!

!!

"#\$#\$#!%&')&* (!+,-!. /#0/)'!123\$*&!&'!#\$#'' /5647!28!+,-!. /#0/)'9!
 : 4!+,-!. /#0/)'!#) /!/\$*23)#; /0!(2!<#)(&*<#(/=&*)/)#(&\$; !2<<2)(3\$&(&'!82)!23)!+,-!*2553\$&(79!
 "\$#\$#!%&')&* (!+,-!. /#0/)'!123\$*&! 3<<2)(' !#0!<)252(/!' ! 3<<4/5/\$(#44/#0/)'>&<!
 #0!/03*#(&2\$#4!2<<2)(3\$&(&'!82)!+,-!723(>!#\$04/#0/)'9!

!



"#\$%&'()*+,-./:0123456789!@#

Ma a D La M S

!

Applicant's Information

- 1) Attach your 4-H Resume (not bullet points) to include the following. Show dates involved in each activity and include specific information and details where it will enhance your resume:**
- a) Years as member or leader (Leaders separate years as youth and as leader)
 - b) Clubs lead (type of leader) or youth include projects and clubs you are involved in
 - c) 4-H Recognition(s) received
 - d) Club or Leader Council offices or committees held
 - e) Educational conferences attended- District, State and National
 - f) District events such as clinics, camps, conferences, fundraising involved in and what role you played (i.e. chair, worker, committee member, etc.) Do not include fundraisers where 4-H youth or leader personally benefits.)
 - g) 4-H Community Service activities
 - h) Other 4-H events such as district classes you have attended or presented at

2) Why do you want to attend this event? And what specific information or skill do you hope to gain from this event?

"#\$%&'()*+,-./:0123456789!@# : 4!+, -!./#0/)!#/\$*23#;/0!(2!<#)(*<#(/=!*)/#(&\$;!2<<2)(3\$(&'!82)!23)!+, -!*2553\$(79!! "#\$%&'()*+,-./:0123456789!@# 3<<2)('!#\$0!<)252(/'! 3<<4/5/\$(#44/#0/)'>&<!! #0!/03*#(82\$#4!2<<2)(3\$(&'!82)!+, -!723(>!#\$04/#0/)'9!

!

!

"#\$%&'()*+,-

!

"#\$%&'()*+,-